

# PNEUMATRON

www.pneumatron.co.za

sales01@pneumatron.co.za

## PVX2XXW Stainless Steel Series ELECTRIC MOTOR - 2/2 Way STAINLESS BALL VALVE

### PLEASE NOTE

There are Electronic Boards inside these valve actuators and therefore they cannot be mounted on vibrating surfaces or pipes. Mount them on a fixed surface and connect to the generator with rubber hoses.

### SPECIFICATIONS:

Media: Compatible media with Stainless Steel, PTFE & EPDM.

Ambient temperature: Minus 15 to 50 Deg C

Media temperature: 2 to 95 Degrees C

Voltages: DC9-24V and AC110-230V

Voltage range depends on Wiring Type & Valve Size

Actuator Protection: IP67



### PLEASE NOTE FOR ALL AUTO CLOSE VALVES (W52 Wiring):

Ball valve is not suitable for high frequency cycle rates, maximum 6 cycles per hour.

For ball valves sizes 1/4", 1/2", 3/4" & 1" the minimum open time for Normally Closed (PVC) valves is 1 to 3 minutes, minimum close time for Normally Open (PVO) valves is 1 to 3 minutes.

**1/4" (8mm), 1/2" (15mm), 3/4" (20mm) & 1" (25mm) close and open in +/- 3 seconds**

For ball valves sizes 1 1/4", 1 1/2" & 2" the minimum open time for Normally Closed (PVC) valves is 5 minutes, minimum close time for Normally Open (PVO) valves is 5 minutes.

**1 1/4" (32mm), 1 1/2" (40mm) & 2" (50mm) close and open +/- 10 seconds**

Port & Orifice Size	Pressure Range	Wiring Options (pg. 2)	Body
1/4" BSP (8 mm)	0 to 10 Bar	W52 / W73	PVX208WXXDX
1/2" BSP (15 mm)	0 to 10 Bar		PVX215WXXDX
3/4" BSP (20 mm)	0 to 10 Bar		PVX220WXXDX
1" BSP (25 mm)	0 to 10 Bar		PVX225WXXDX
1 1/4" BSP (32 mm)	0 to 10 Bar	W52 / W63	PVX232WXXDX
1 1/2" BSP (40mm)	0 to 10 Bar		PVX240WXXDX
2" BSP (50 mm)	0 to 10 Bar		PVX250WXXDX

### Wiring options:

Please refer to page 2 or phone/email us for assistance.

PVX - PVC=Normally/Fail Closed, PVO=Normally/Fail Open, PVD=Detend (Depends on wiring)

WXX - Describes wiring type see page 2 (typically W52 / W73 / W63)

DX - Describes voltage (D1=AC110-220V, D2=DC9-24V)

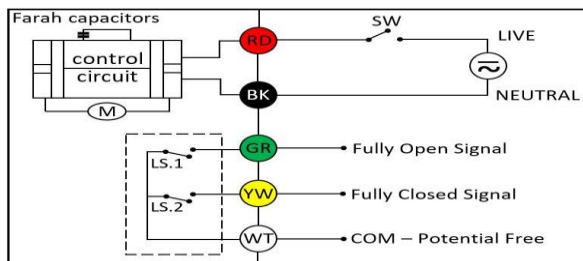
# PNEUMATRON

www.pneumatron.co.za

sales01@pneumatron.co.za

## Wiring diagrams

### W52-D1=AC110-220V



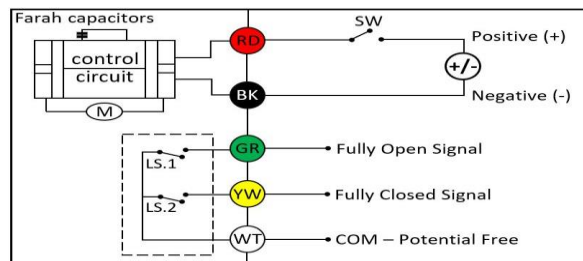
SW is closed, the valve opens. Actuator switches off automatically when ball valve is completely open.

SW is open, the valve closes. Actuator switches off automatically when ball valve is completely closed.

GR & WT connects to signal when the valve is fully open.

YW & WT connects to signal when the valve is fully closed.

### W52-D2=DC9-24V



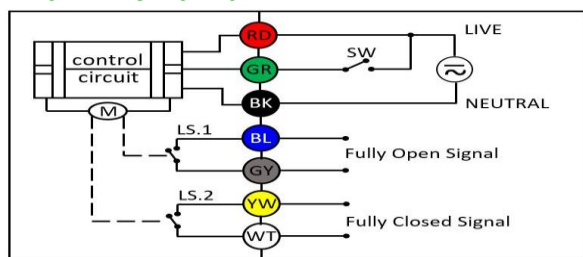
SW is closed, the valve opens. Actuator switches off automatically when ball valve is completely open.

SW is open, the valve closes. Actuator switches off automatically when ball valve is completely closed.

GR & WT connects to signal when the valve is fully open.

YW & WT connects to signal when the valve is fully closed.

### W73-D1=AC110-220V



RD & GR connects to LIVE, BK connects to NEUTRAL

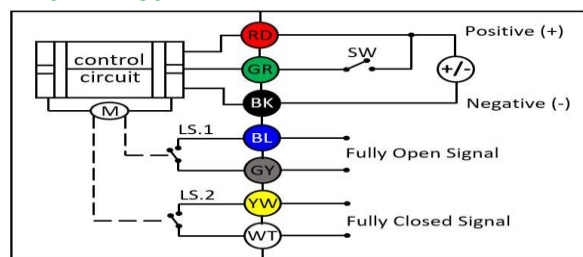
When RD & SW are connected, the valve opens. Actuator switches off automatically when ball valve is completely open. Valve remains in open position

When GR & SW are connected, the valve closes. Actuator switches off automatically when ball valve is completely closed. Valve remains in closed position.

BL & GY connects to the valve's fully-open signal wiring.

YW & WT connects to the valve's fully-closed signal wiring.

### W73-D2=DC9-24V



RD & GR connects to POSITIVE, BK connects to NEGATIVE

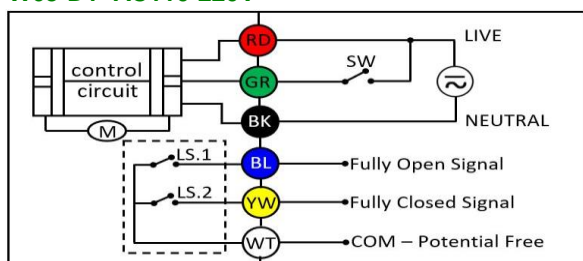
When RD & SW are connected, the valve opens. Actuator switches off automatically when ball valve is completely open. Valve remains in open position

When GR & SW are connected, the valve closes. Actuator switches off automatically when ball valve is completely closed. Valve remains in closed position.

BL & GY connects to the valve's fully-open signal wiring.

YW & WT connects to the valve's fully-closed signal wiring.

### W63-D1=AC110-220V



RD & GR connects to LIVE, BK connects to NEUTRAL

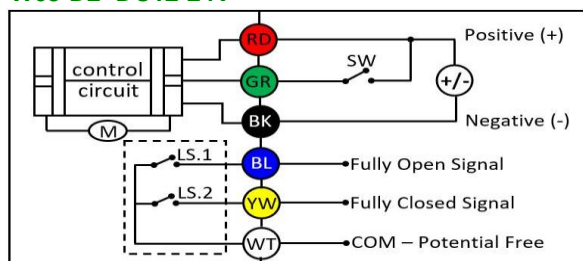
When RD & SW are connected, the valve opens. Actuator switches off automatically when ball valve is completely open. Valve remains in open position

When GR & SW are connected, the valve closes. Actuator switches off automatically when ball valve is completely closed. Valve remains in closed position.

BL & WT connects to the valve's fully-open signal wiring.

YW & WT connects to the valve's fully-closed signal wiring.

### W63-D2=DC12-24V



RD & GR connects to LIVE, BK connects to NEUTRAL

When RD & SW are connected, the valve opens. Actuator switches off automatically when ball valve is completely open. Valve remains in open position

When GR & SW are connected, the valve closes. Actuator switches off automatically when ball valve is completely closed. Valve remains in closed position.

BL & WT connects to the valve's fully-open signal wiring.

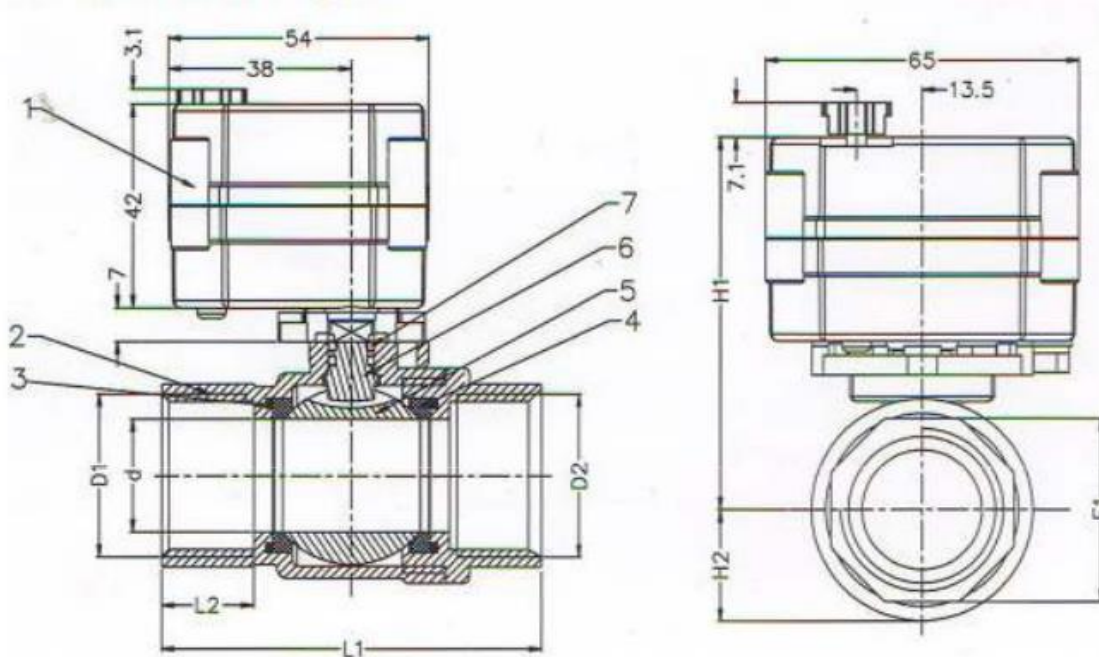
YW & WT connects to the valve's fully-closed signal wiring.

# PNEUMATRON

www.pneumatron.co.za

sales01@pneumatron.co.za

## Dimensions



### BODY DIMENSION CODE (Size in mm)

Valve body	D1/D2	L1	L2	E1	H1	H2
PVX208WXXDX	1/4" (8mm)	52	12	21	81	15
PVX215WXXDX	1/2" (15mm)	63	15	25	84	17
PVX220WXXDX	3/4" (20mm)	72	17	31	89	20
PVX225WXXDX	1" (25mm)	80	21	38	91	24
PVX232WXXDX	1 1/4" (32mm)	101	26	47	123	30
PVX240WXXDX	1 1/2" (40mm)	115	27	54	126	36
PVX250WXXDX	2" (50mm)	130	25	66	134	45

## VALVE INSTALLATION INSTRUCTIONS

1. Please note the IP rating of this valve, it is not fully waterproof.
2. The valve label will indicate the valve body material and the seal material. Never apply incompatible fluids or gasses with the body and seal material.