

PNEUMATRON

www.pneumatron.co.za

sales01@pneumatron.co.za

POM20 - PLASTIC ELECTRIC ACTUATORS ISO5211 MOUNTING STANDARD

PLEASE NOTE

There are Electronic Boards inside these valve actuators and therefore they should not be mounted on surfaces or pipes that vibrate excessively.

GENERAL SPECIFICATIONS:

Allowed Ambient Temperature for operation : -10°C to +70°C

Standard Rotarion Angle Preset : 90°

Voltages: 220VAC, 24VDC, 24VAC, 12VDC

Pressure: 0 to 10 Bar

Open/Close Time: 15 Seconds

Enclosure Rating: IP67 - Waterproof & Dustproof



ACTUATOR PART NO:	VOLTAGE Volts	POWER Watts	CURRENT Amps	PRESSURE Bar	90° RUNTIME Seconds	TORQUE Output Nm	SHAFT	FLANGE	RATING
POM20A	220VAC	20W	0.25A	10 Bar	15S	25	11*11	F03/F05	IP67
POM20B	24VDC	10W	0.5A	10Bar	15S	25	11*11	F03/F05	IP67
POM20C	24VAC	20W	0.25A	10 Bar	15S	25	11*11	F03/F05	IP67
POM20D	12VDC	10W	0.5A	10Bar	15S	25	11*11	F03/F05	IP67

**PVC Valve Bodies Available in 1" (25mm), 2" (50mm), 2 1/2" (65mm)
PPH Valve Bodies Available in 1" (25mm) and 2" (50mm)**

PLEASE NOTE: We cannot assist you with the wiring or connection to any system. Please get a Qualified electrician to assist you with the wiring as per diagram actuator .

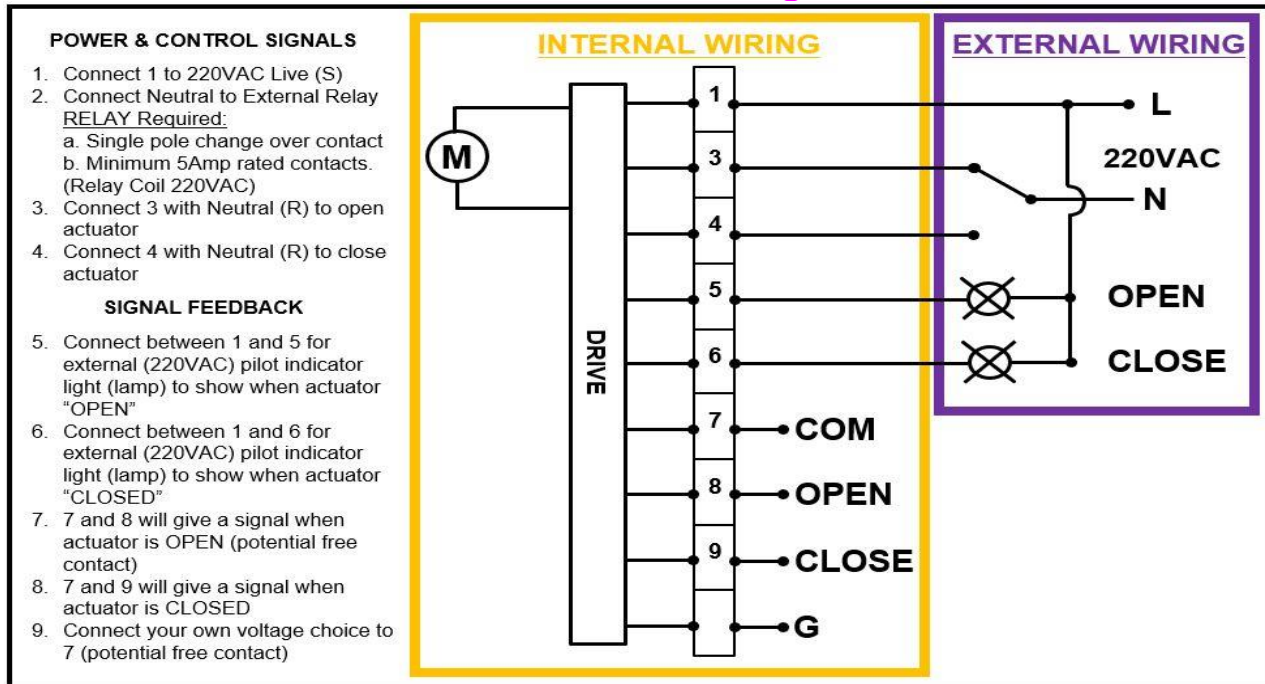
PNEUMATRON

www.pneumatron.co.za

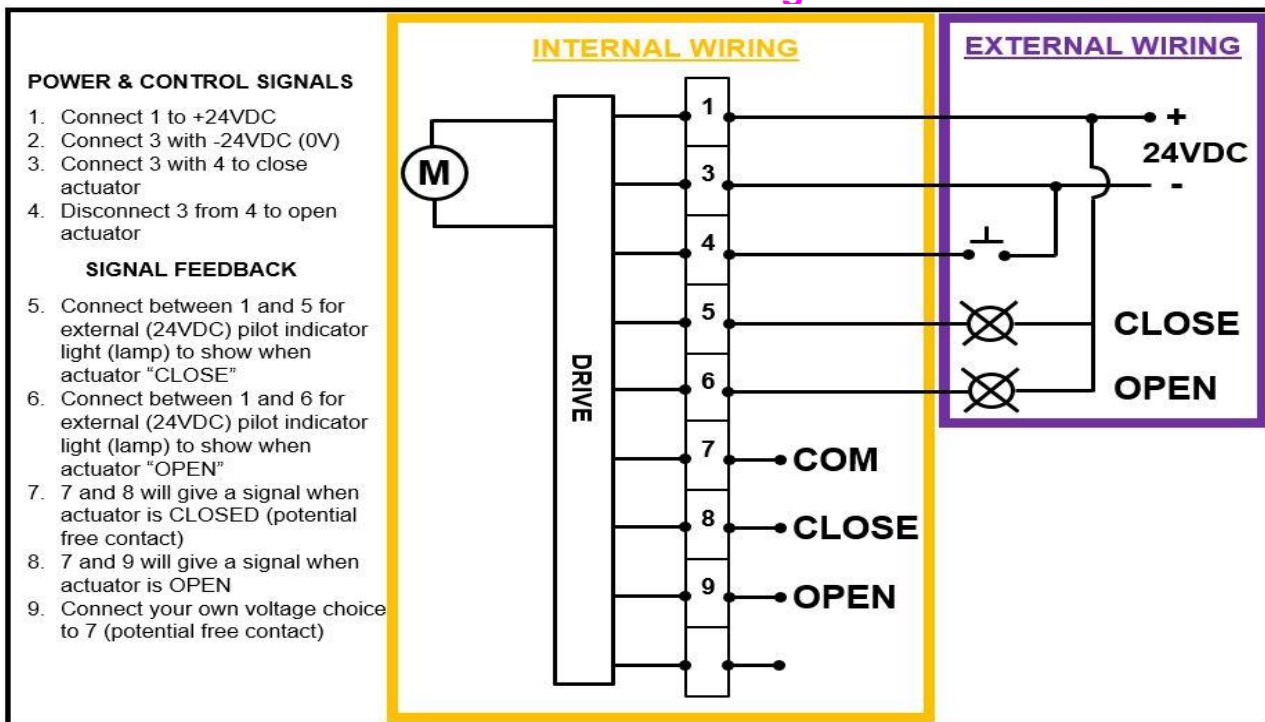
sales01@pneumatron.co.za

Wiring diagram:

POM20 - AC Voltage



POM20 - DC Voltage



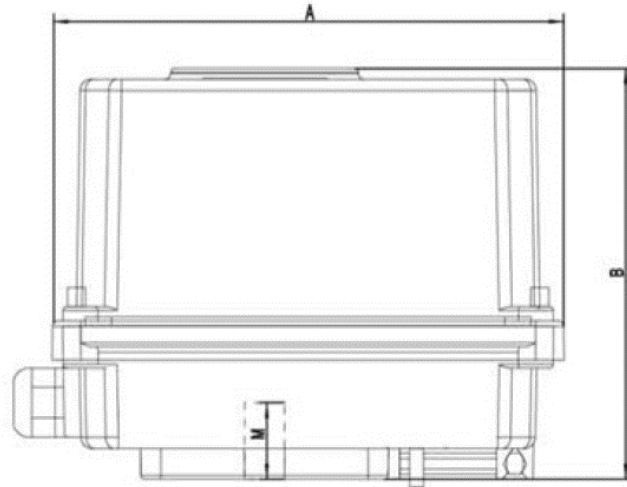
PNEUMATRON

www.pneumatron.co.za

sales01@pneumatron.co.za

Dimensions

POM20 - DIMENSIONS



SHAFT HOLE DEPT =17mm -11mm SQUARE

POM20	
A	136
B	133
C	5
D	160
E	20
F	36
K	50
N	57
IXJ	4xM5
GXH	4xM6
OSP	4xM6
M	17
L	11
ISO5211	F03/F05

