

PNEUMATRON

www.pneumatron.co.za

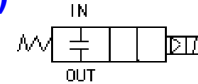
sales01@pneumatron.co.za

2/2 Industrial Solenoid Valve

PDS23 Brass Series, Diaphragm Pilot Operated (N.O)

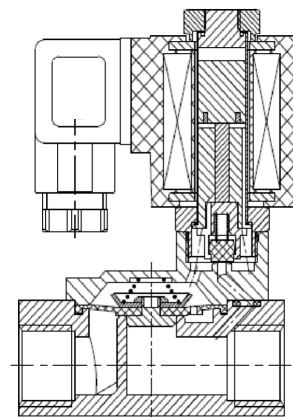
- Characteristics:**
1. Pilot operated diaphragm construction with power, consumption for longtime
 2. Lifespan can be at 1 million cycles from 0.3 bars

Medium: Water, Oil, Natural gas, Hot water
Temperature: VITON: -10°C to 140°C
Pressure: PDS23 - 0.3 to 6/10Bar
Body: Brass
Port Size: 1/2", 3/4", 1", 1 1/4", 1 1/2", 2"
Orifice (mm): DN 15, 20, 25, 32, 40, 50
Coil voltages: 12VDC/24VDC/110VAC/220VAC/380VAC
Coils: C13DXB, 22VA (AC), 15W (DC), IP65, 100%ED
 PDS23 series



Material:

Body material: Brass
 Seal material: VITON
 Armature Tube: Stainless Steel 304
 Plunger: Stainless Steel 430F
 Springs: SS 304
 Shading Rings: Stainless Steel



PDS23 Brass Series - Normally Open, with C13DXB coil

Port Size	Orifice	Kv	Min Pressure	Max Pressure		Seals Material	Body Material	Valve No:	Coil
				AC(17VA)	DC(14W)				
1/2"	15	3.88	0.3Bar	10 Bar	10 Bar	NBR, EPDM, VITON	Brass	PDS23BH15S04V	C13D
3/4"	20	8.02	0.3Bar	10 Bar	10 Bar			PDS23BH20S06V	C13D
1"	25	10.34	0.3Bar	10 Bar	10 Bar			PDS23BH25S10V	C13D
1 1/2"	40	24.1	0.3Bar	6 Bar	6 Bar			PDS23BH40S14V	C13D
2"	50	41.38	0.3Bar	6 Bar	6 Bar			PDS23BH50S20V	C13D

PNEUMATRON

www.pneumatron.co.za

sales01@pneumatron.co.za

2/2 Industrial Solenoid Valve

PDS23 Brass Series, Diaphragm Pilot Operated (N.O)

BODY DIMENSION CODE(Size in mm)					Valve Body
A	B	C	D	G	
73	48	93	13.5	15 (1/2")	PDS23BH15S04V
83	60	114	16.5	20 (3/4")	PDS23BH20S06V
100	70	126	21	25 (1")	PDS23BH25S10V
130	92	140	28.5	40 (1 1/2")	PDS23BH40S14V
156	113	155	34	50 (2")	PDS23BH50S20V

